

The ROSE Procedure

Restorative “Incisionless” Obesity Surgery

Even the most successful bypass patients occasionally regain weight. New surgical technology now allows surgeons to treat one of the potential sources of this weight regain. The ROSE procedure (Restorative Obesity Surgery, Endolumenal) provides an incisionless surgical option to restore gastric bypass patients’ anatomy to closely match original post-surgery sizes.

Restore
Your
Success



Incisionless
Surgical
Option

You may be a candidate for a new
Incisionless Surgical Procedure to start
you back on the road to losing weight.



Have you regained some of the weight you initially lost after Gastric Bypass Surgery?

Your stomach pouch or stoma (the connection between the pouch and small intestine) may have stretched out in the years since your original surgery, reducing the feeling of fullness after you eat.

We now offer the ROSE procedure, an incisionless surgical procedure that restores the size of the pouch and stoma close to the original post-surgery proportions.

Using new surgical tools, surgeons create and suture folds into the pouch to reduce its volume and at the stoma to reduce its diameter. The surgeon performs the procedure entirely through the mouth without making any external incisions into the body.

Due to the lack of external incisions, the ROSE procedure is expected to provide important advantages, including, less risk than traditional open or laparoscopic surgery, minimal postoperative pain, fast recovery time and no scarring.

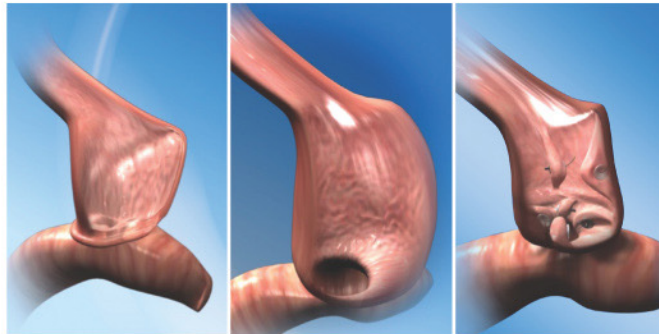
Keeping your weight down after gastric bypass is vital to improve your health and reduce the co-morbidities associated with obesity such as Type II diabetes, heart disease, joint disease and respiratory conditions. If you have started to regain weight since your initial surgery, [ask your doctor if the ROSE procedure might be right for you.](#)

Who is eligible for the new incisionless, restorative ROSE procedure?

Patients who were originally successful losing weight following Gastric Bypass and now find themselves regaining weight may be ideal candidates for this procedure. After an initial screening, you will undergo a series of evaluations including nutritional and dietary counseling, a full medical exam and endoscopy to determine if you are a good candidate.

What does the ROSE procedure entail?

The ROSE procedure is performed using a four-channel tube and special Incisionless Surgery tools. The surgeon advances the flexible tube and a small endoscope through the patient's mouth, into the stomach pouch. The surgeon will then insert the surgical tools through the channels of the tube. Tissue anchors are used to create multiple tissue folds around the stoma to reduce the diameter. The surgeon will then use the same technique to place anchors in the stomach pouch to reduce its volume.



The ROSE Procedure: Restoration of the Gastric Pouch and Stoma

How long will I need to stay in the hospital?

The length of your stay will be determined by your surgeon. You may be discharged the same day if the procedure was done early in the morning, or your surgeon may want you to stay overnight. Your surgeon will make the determination following your procedure.

What are the benefits of an incisionless procedure?

By eliminating skin incisions, this new procedure may provide important advantages to patients, including reduced risk of

infection and associated complications, less post-operative pain, faster recovery time, and no abdominal scars.

What type of side effects can I expect?

It is anticipated that patients will feel little or no discomfort from the procedure. The most common reported side effect has been short-term sore throat.

Is it safe?

As with any surgery there is risk involved. The ROSE procedure is new and long-term data are not yet available. This less invasive approach should reduce the likelihood of many of the complications associated with the other open or laparoscopic revision procedures.

What is the success rate?

As with any weight loss procedure, results vary with each patient. The ROSE procedure has been well tolerated and most patients experience weight loss as they eat less – with the return of the early feeling of “fullness” due to the restriction of the new, smaller pouch. The ROSE procedure is new and long term data are not yet available.

What is the recovery process?

Typically patients return to normal activity within a few days of their procedure. Your doctor will give you specific instructions. In addition, you will be required to follow a post-procedure diet and exercise plan, similar to the regimen prescribed following your initial bypass surgery. To help you on your journey, follow-up appointments with your doctor and regular visits with our bariatric support staff will be required.